

# SOLITAIRE

THE FINE ART  
OF JEWELLERY

ASIA PACIFIC  
EDITION

## GOLDEN LEGACIES

Louis Vuitton  
Tiffany  
Piaget

## ORNATE HOROLOGY

New Chronographs  
Green Timepieces  
Gold Watches

## PLUS

Julianne Moore

## HAUTE REGALIA

Revival Jewellery  
Precious Metals  
Verdant Jewels

88

April - May 2017



GOLD  
EDITION



# ODE TO ORE

AN INSIDER GUIDE TO  
PRECIOUS METALS  
IN JEWELLERY





**D**iamonds and precious stones are the centre of attention in jewellery, while the metals which hold the pieces together are usually taken for granted. Yet, those metals are crucial, in terms of both aesthetics and value, and used for jewellery, coinage and bullion. Amongst the 84 known metals, gold, silver, platinum, titanium, and rhodium are royalty, and used for fine jewellery. The most commonly used – of course – is gold, followed by silver.

Historians estimate that the practice of gold mining started about 7,000 years ago, and currently, over 2,500 tonnes of gold are mined annually. Standardised trading prices facilitate buying and selling, as is the case for platinum, another popular metal of choice. The matte-finished white metal is a lot tougher, denser, and resistant to wear and tear, and therefore a favourite choice for high value products, such as engagement rings.



OPPOSITE  
Model wearing pieces  
from the Waterfall  
collection,  
MIKE JOSEPH

THIS PAGE  
FROM TOP  
Pendant and earrings in  
18K rose gold from the  
Scudi collection,  
ROTA E ROTA

*Coco Crush*  
asymmetrical earrings  
in 18K yellow and white  
gold, CHANEL

Bracelet in 18K rose  
gold from the Rose  
Cut Forever collection,  
DAVID MORRIS

*Solo Venezia* earrings,  
FOPE

Ring in rose gold with  
diamonds, ENTICE

While gold is easy to carve, melt, and mould by hand or lost wax casting, platinum is harder to work on, and can be shaped only by special centrifugal casting methods. The high density of platinum also brings an increase of 30% in weight than gold. At the same time, the strength of platinum has made it one of the most favourite metals by the world's leading high jewellers.



FROM LEFT  
Various engagement  
rings in platinum  
with diamonds,  
TIFFANY & CO.

Keys pendants with in  
platinum with diamonds,  
TIFFANY & CO.

*Iraja* scarf in platinum  
and diamonds,  
GANJAM



## TITANIUM IS CORROSION-RESISTANT AND EXHIBITS RAINBOW COLOURS WHEN HEAT-TREATED



Discovered in 1791, titanium is the latest metal on the jewellery block. Named after the Greek mythology *Titans*, the metal, when alloyed, is as robust as its name. It is corrosion-resistant, extremely light, and exhibits rainbow colours when heat-treated. Titanium is now being explored by jewellers and watchmakers, and due to its durability and ability to showcase rainbow-like hues of blue, green, and purple, titanium, it is gaining popularity in jewellery design.



FROM LEFT  
*Midnight Gaze* necklace  
in titanium, CARATELL

Diamond and titanium  
ear studs, DIACOLOR

Titanium and  
diamond bangle,  
MESSIKA JOAILLERIE

Titanium and diamond  
ear drops, DIACOLOR

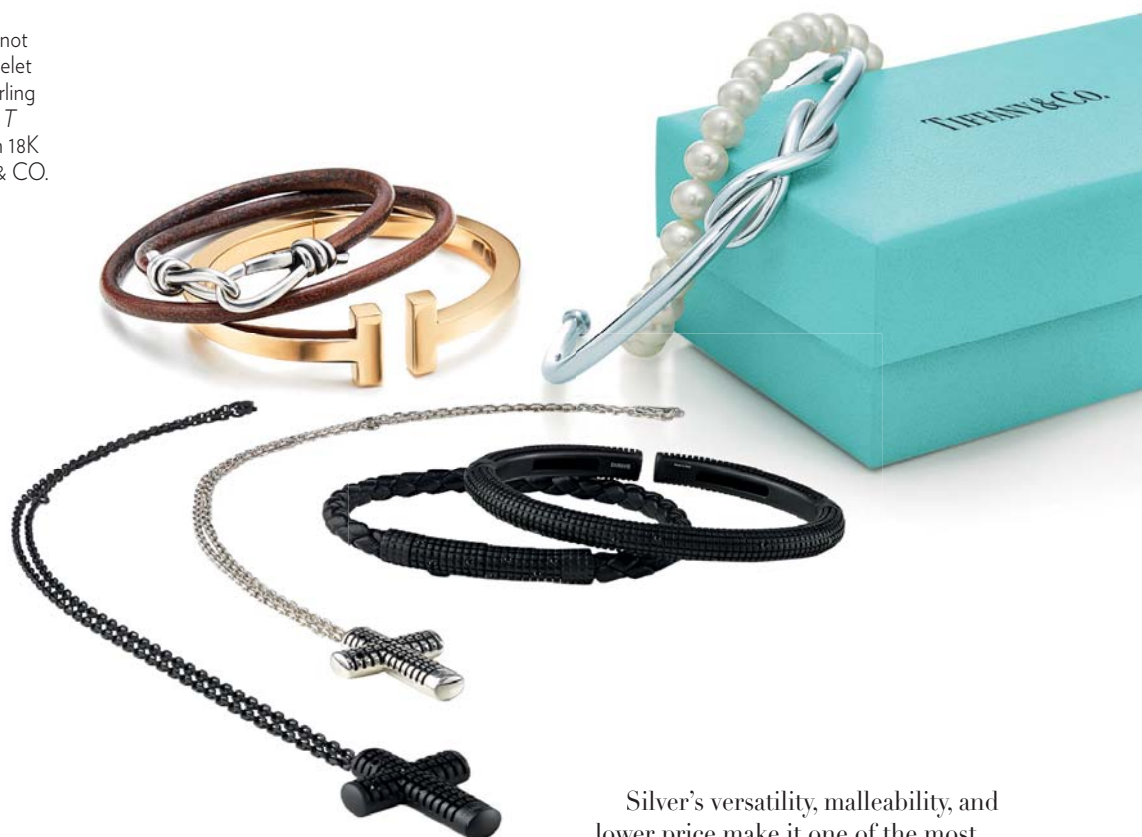




CLOCKWISE FROM RIGHT  
Infinity cuff in sterling silver and bracelet of freshwater pearls and sterling silver, TIFFANY & CO.

*Metropolitan Dream* by H. Nakata bracelets in silver and leather, DAMIANI

Paloma Picasso knot double wrap bracelet in leather and sterling silver, and *Tiffany T* square bracelet in 18K gold, TIFFANY & CO.



## RHODIUM PLATING IMPROVES APPEARANCE AND TARNISH- RESISTANCE

Silver's versatility, malleability, and lower price make it one of the most common metals in jewellery. It can be handcrafted to fine detail. However, this favourite metal has a major drawback — it tarnishes. So rhodium plating is used to give the metal an extra lustre, reducing the amount needed for polishing. Rhodium itself is a silvery-white metal and part of the platinum group. It is commonly used to plate white gold and silver jewellery to improve appearance and tarnish-resistance. Surface colours of metals used in jewellery can also be altered with the use of rhodium. One of the most valuable metals around, it is also used in surface treatment technique on jewellery, known as rhodium flashing. 💎

CLOCKWISE FROM TOP  
Necklace in 18K white and black gold, South Sea and Tahitian pearls, and diamonds, YOKO LONDON

*Bolero* bracelet in black rhodium gold, brown diamonds, and Tahitian pearls, UTOPIA

*Bolero* earrings in black rhodium gold and South Sea pearls, UTOPIA

Earrings in South Sea pearls, diamonds, and 18K black gold, YOKO LONDON

