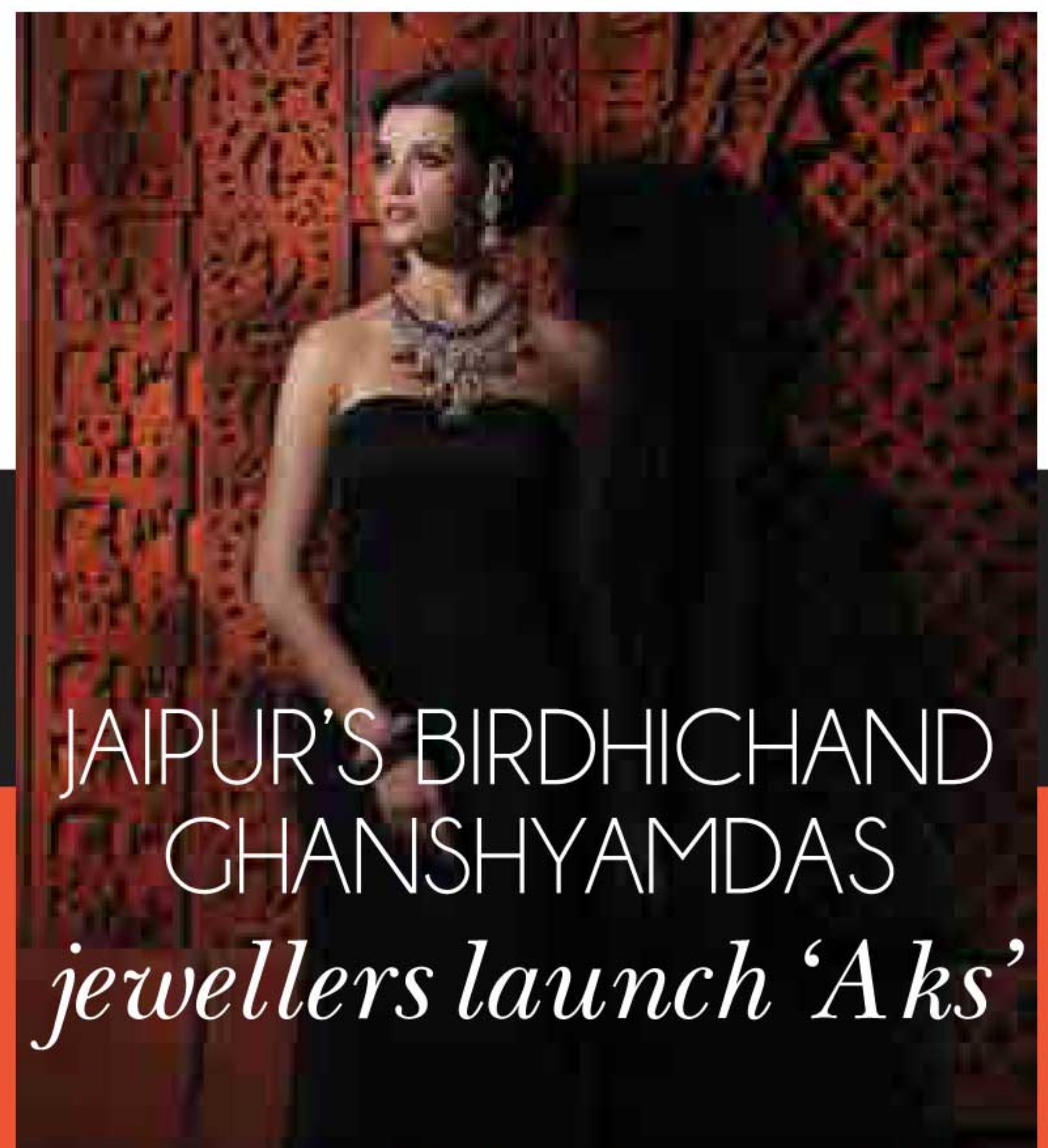


Model showcasing necklace from Birdhichand's Aks collection



2 JAIPUR'S BIRDHICHAND GHANSHYAMDAS jewellers launch 'Aks'

Birdhichand Ghanshyamdas Jewellers, a name that is as enduring as time, brings forth a collection that holds in its soul, the reflection of the beautiful time gone by- 'Aks : The Reflection of Time'. Creating dazzling magic on the ramp with an evening of glitz glamour and dazzle, Birdhichand Ghanshyamdas Jewellers unveiled their latest glittering "AKS" collection at the India International Jewellery Week 2014.

1 Frey Wille LAUNCHES CLAUDE MONET INSPIRED COLLECTION, SINGAPORE

FREY WILLE's team of passionate artists, designers, goldsmiths and enamel specialists have again done what no other could do by replicating the art of the French Impressionist 'Claude Monet'. They have created three ranges under this collection- Giverny, Honfleur and Orangerie which are truly to their inspiration and also in tune with the company's identity of uniqueness, brilliant colours and exclusive quality.



Hand clutch by Frey Wille from Claude Monet collection



Anmol jewellery CHARM CLIENTS WITH ELEPHANT JEWELLERY

Anmol Jewellers embrace the arrival of Lord Ganesha with their elephant inspired collection. Crafted in a mix of 18 and 22 karat gold, the collection boasts the use of elaborate elephant motifs in an amalgamation of modern designs that bring out the gusto and passion with which the festival is celebrated. Embellished with emeralds, brilliant & uncut diamonds, the pieces are meticulously crafted and showcase the artistry of the brand.

Elephant inspired hand ornament by Anmol Jewellers

4 Golecha jewellers LAUNCH THEIR LATEST BRIDAL JEWELLERY COLLECTION, MUMBAI



Golecha jewellers presented their latest collection at IIJW 2014, which was a visual treat featuring the most exquisite rose cut diamonds, uncut diamonds, full cut diamonds, pearls, rubies and emeralds. The jewellery was a sensational offering for any bride who wants to take her final vows. Adding to the drama of the show was famous Bollywood actress- super star Sridevi; who walked the ramp wearing a Patiala royalty inspired necklace.

Bollywood actress Sridevi showcases Golechas Patiala inspired necklace



Model showcasing jewellery from Tanishq's Inara 2

TANISHQ 5 introduces 2nd edition of its famous Inara collection

Tanishq, India's largest and most preferred jeweller introduces Inara 2, an extension to their most loved diamond jewellery collection line launched last year. Inspired from the vivid, nautical underwater life, Inara celebrates marine plants and under currents of the sea life replicating its textured surfaces, fluid fineness and interwoven entities into the pieces. Inara was unveiled to the jewellery lovers in a magnificent show that created a perfect backdrop as models swayed the runway draped in exquisite outfits complemented by the stunning Inara jewellery.