

# SOLITAIRE

THE FINE ART  
OF JEWELLERY

ASIA PACIFIC  
EDITION

## GOLDEN LEGACIES

Louis Vuitton  
Tiffany  
Piaget

## ORNATE HOROLOGY

New Chronographs  
Green Timepieces  
Gold Watches

## PLUS

Julianne Moore

## HAUTE REGALIA

Revival Jewellery  
Precious Metals  
Verdant Jewels

88

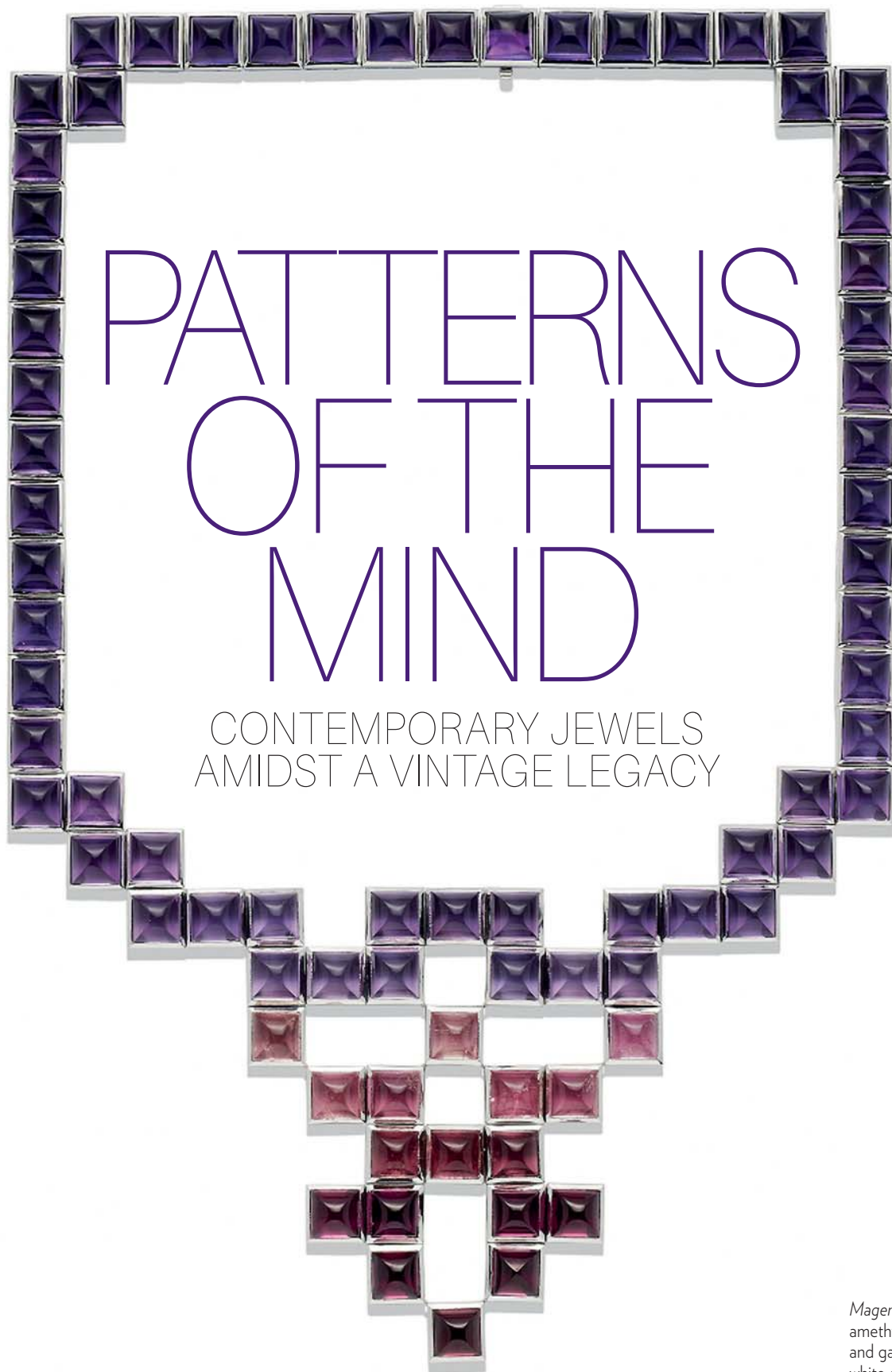
April - May 2017



GOLD  
EDITION

AMY BURTON

by Preeti Agarwal



*Magenta necklace with amethysts, tourmalines, and garnets in 18K white gold from the Crescendo collection*

TOP  
Amy Burton at work

BOTTOM FROM  
LEFT  
Gold and diamond  
ring from the Disorient  
collection

Crossover diamond ring,  
one of the first pieces  
Amy Burton designed

Aquamarine ring in  
platinum and diamonds  
from the Disorient  
collection

Solis sapphire ring from  
the Unum collection

Threadneedle diamond  
ring from the Unum  
collection

Creating a name for oneself in the same arena as one's successful parents is difficult. But Amy Burton managed to do just that, amidst her parent's vintage jewellery legacy, Hancocks. Burton always had an inkling towards design. "As I spent time at Hancocks, around all this incredibly beautiful jewellery, I realised I constantly had designs buzzing in my head," she shares. "Eventually I decided I needed to do something about it."

A jewellery exhibition by JAR in London inspired the young girl, and she soon enrolled herself in a design course at GIA London, followed by gemmology courses. All the while she continued working at Hancocks as a buyer. Her unique and bold style received recognition throughout her courses, first from the *H. Goldie Jewellery Design Competition* in 2013, and later, *The Goldsmiths' Craft and Design Council Annual Awards* for her radical *Skyline* rings. "The concept came purely from my love of London and other cities. It is an homage to our beloved cities," explains Burton. The rings cleverly depicted the skylines of cities including London and Paris, using irregular and interesting-shaped diamonds to form landmarks such as the Shard and the Gherkin.

Although the full collection is yet to be realised, Burton's goal is to create unusual but wearable fine jewellery, along with a strong design aesthetic. One of the initial pieces she designed was the two-stone crossover ring. The ring features two 20ct cushion-shaped diamonds, cut from the same rough with identical characteristics.



"I know this may sound fairly ludicrous as wearing over 40 carats of diamond on your finger is far from what you may imagine as a 'wearable' ring," she explains. "Every time people put it on, they are surprised at how it sits so perfectly on the hand, which is not an easy feat with stones that large." The curves and contours of the ring are very precise, with the setting adding a vintage feel.

Towards the end of 2016, Burton launched her own jewellery line, Amy Burton Fine Jewellery, with three inaugural collections — *Disorient*, *Unum*, and *Crescendo*.

## BURTON'S PASSION AND DEDICATION RESULTED IN HER OWN JEWELLERY LINE





Tourmaline pendant  
in rose gold from the  
*Disorient* collection

CLOCKWISE FROM  
TOP

Gold earrings from the  
*Disorient* collection

Aquamarine ring from  
the *Disorient* collection

Amethyst cuff bangle  
in 18K yellow gold from  
the *Disorient* collection

*Cassiopeia* diamond  
ring from the *Unum*  
collection

The three vary in their inspirations, each backed by life events. *Disorient* is chaotic yet elegant in its own way with sculptural designs that feature large gems, taking its final inspiration from a wrought iron gate in the gardens of the Penny Guggenheim Museum. "Chaos is something that can happen in our minds, and we all need to find our own unique way to calm it down. Designing is my way."

The *Unum* collection revolves around grand centre stones that were sourced by her brother Guy, who works as a diamond expert at Hancocks. "He is constantly sourcing fantastic stones for his bespoke diamond rings at Hancocks. He often lets me work with the ones that particularly spark my imagination," adds Burton. One special ring

from this collection sports a unique 'Moval' diamond — a hybrid of a marquise and an oval cut — set between spirals of baguette-cut stones wrapping around the finger.

*Crescendo* has a very playful approach with its colour graduation, sugar loaf stone shape, and a silhouette that is associated with childhood memories. "The shape itself is a retro childhood influence — *Tetris*," she says. "I loved the challenge of taking a silhouette that looks very rigid and geometric, yet flows and sits perfectly over the shoulders and collarbone."

A hands-on artist, Burton is involved in every step of the creation and closely follows each of her pieces as it travels from one master craftsman to the other. Picking her favourite between design or manufacturing, she summarises: "Both are equally as exciting. I adore the feeling I get when I perfect the design, a gut instinct that I know the design is just right. Then seeing it come to life is also totally incredible. The whole process is amazing to me." ♦

"WE ALL NEED TO FIND OUR OWN UNIQUE WAY  
TO CALM DOWN. DESIGNING IS MY WAY."